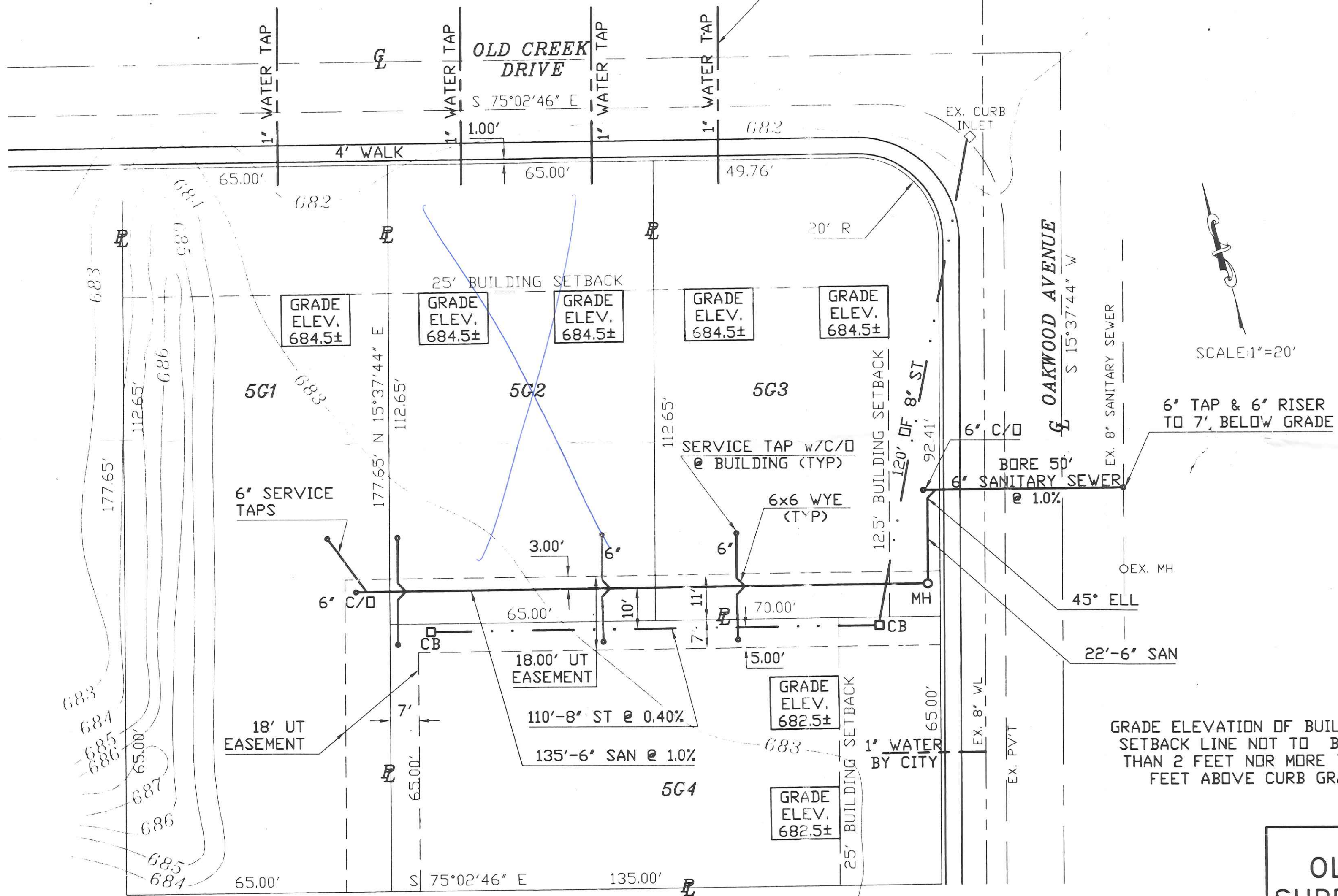


OLD CREEK SQUARE A SUBDIVISION OF LOT 5G SITE PLAN

BY CITY OF NAPOLEON



SCALE: 1"=20'

6' TAP & 6' RISER TO 7' BELOW GRADE

185 Old Creek



GRADE ELEVATION OF BUILDING AT SETBACK LINE NOT TO BE LESS THAN 2 FEET NOR MORE THAN 3 FEET ABOVE CURB GRADE.

**OLD CREEK SQUARE
SUBDIVISION OF LOT 5G**

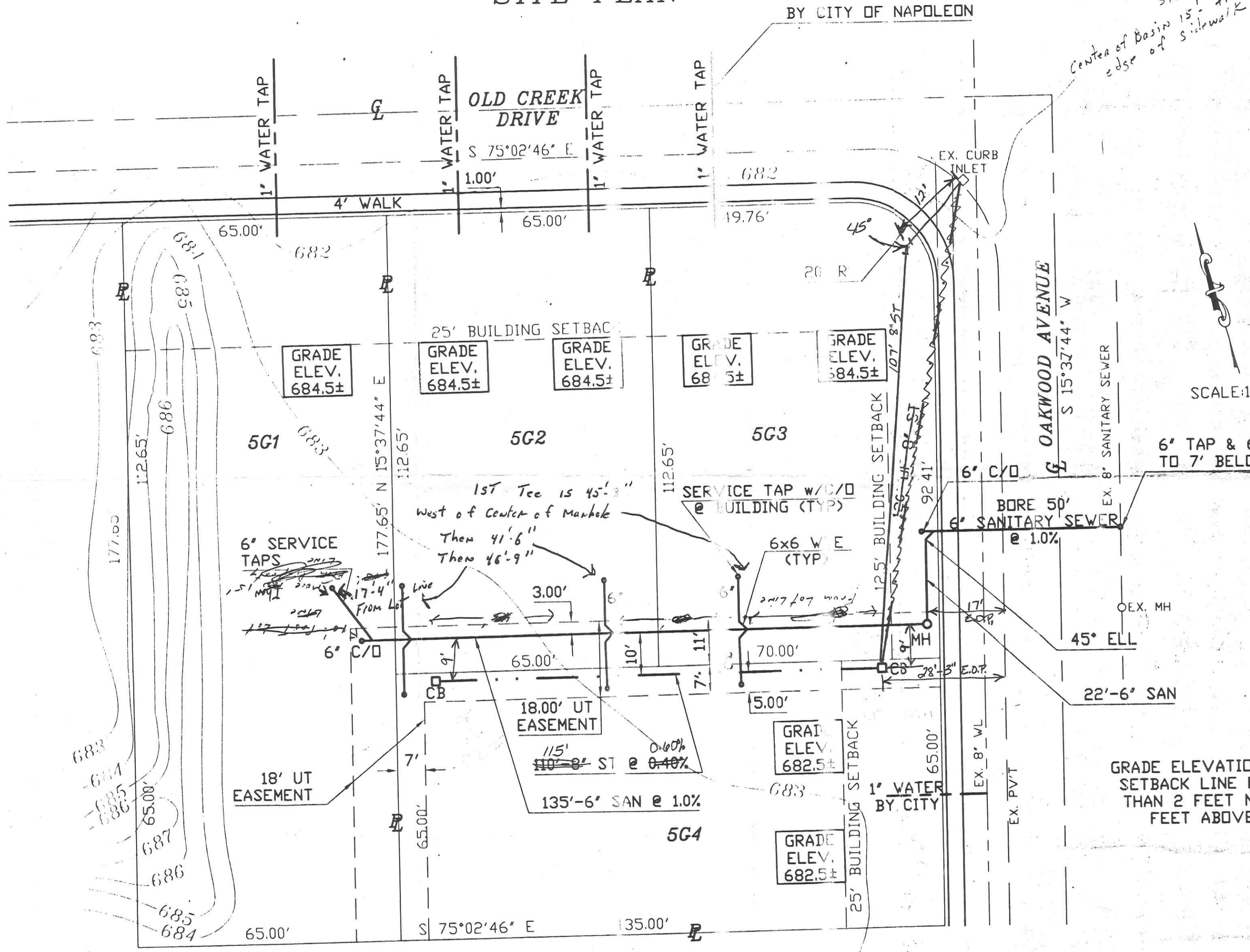
SITE PLAN

NOTES
 ROOF DRAINS, FOUNDATION DRAINS, & OTHER CLEAN WATER CONNECTIONS TO THE SANITARY SEWER ARE PROHIBITED.
 18' VERTICAL & 10' HORIZONTAL SEPARATION SHALL BE MAINTAINED BETWEEN WATER LINE & SANITARY SEWER.

SCALE: 1"=20' DATE: 10/01/03 DWN BY: *EMM*
 BRYAN ENGINEERING & SURVEYING
 ANTHONY H. HOEFFEL
 128 S. LYNN ST. BRYAN, OH 43506
 1-419-636-2060

1
1

OLD CREEK SQUARE A SUBDIVISION OF LOT 5G SITE PLAN



Electric & Gas is OK for Storm Sewer at Curb & Whole Distance

1st Basin 3' Below Sidewalk
Center of Basin 15' from edge of Sidewalk

Water Main is between sidewalk & Curb, may be in way of catch basin
Water main is on East side of Catch Basin out of way.

There should be no UTILITIES in way of Storm Sewer.

Stone 13 Ton 57-

Kieth Cell 579-0848

Can be 43' deep at 1st Basin with 4' Fall on Tile

Cut Hole 41" from Top of Basin or 3" from floor of Basin to Bottom of hole

Cut Hole in 2nd Basin 7" from Floor Basin up To Bottom of hole

SCALE: 1"=20'

6" TAP & 6" RISER TO 7' BELOW GRADE

BORE 50' 6" SANITARY SEWER @ 1.0%

EX. MH 45° ELL

22'-6" SAN

GRADE ELEVATION OF BUILDING AT SETBACK LINE NOT TO BE LESS THAN 2 FEET NOR MORE THAN 3 FEET ABOVE CURB GRADE.



Anthony H. Hoeffel

**OLD CREEK SQUARE
SUBDIVISION OF LOT 5G**

SITE PLAN

SCALE: 1"=20'	DATE: 10/01/03	DWN BY: 27077	1
BRYAN ENGINEERING & SURVEYING ANTHONY H. HOEFFEL 128 S. LYNN ST. BRYAN, OH 43506 1-419-636-2060			1

NOTES
ROOF DRAINS, FOUNDATION DRAINS, & OTHER CLEAN WATER CONNECTIONS TO THE SANITARY SEWER ARE PROHIBITED.
18" VERTICAL & 10' HORIZONTAL SEPARATION SHALL BE MAINTAINED BETWEEN WATER LINE & SANITARY SEWER.

*12-2-03
20-2-03
20-2-03*

*3/1
5/3
5/1*